

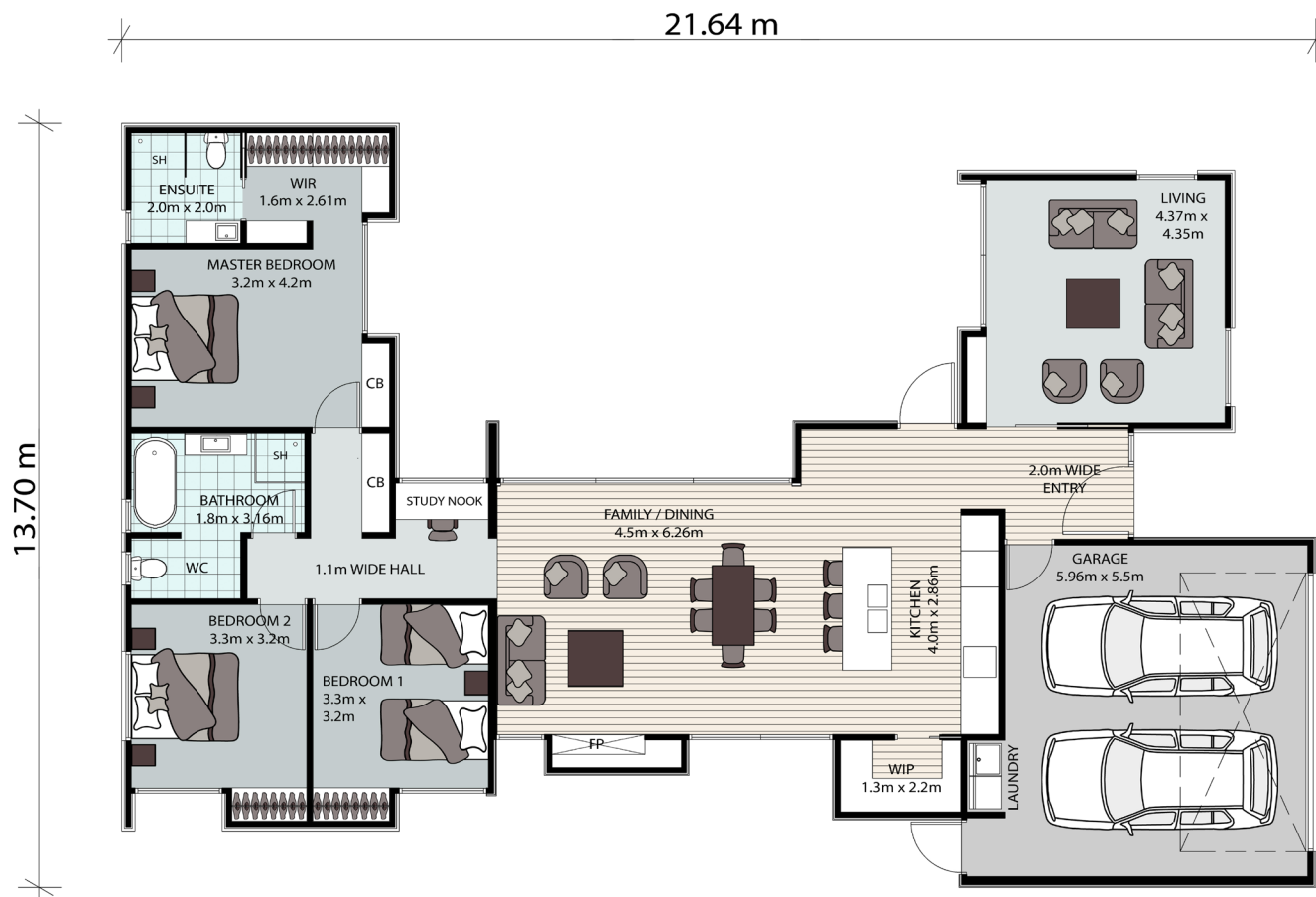
# Cloverden Showhome

Build  
Price

**\$582,000\***

3  2  2  2  2  1 

\*As per showhome specifications



4 Blue Jacket Drive, Halswell

Home **188m<sup>2</sup>**

Site **502m<sup>2</sup>**



**Greenland  
Homes**

0800 123 678  
[greenlandhomes.co.nz](http://greenlandhomes.co.nz)



## This Greenland Home includes

- 2.55m/2.4m/2.7m ceiling heights with cathedral ceiling to dining and living areas to 4.5m high
- Overheight 2.4m grooved interior polycore doors
- Rockcote integra 'Cerano NM' concrete finish to exterior & internal feature wall
- Espan 470 textured matt finish steel roofing
- 2 x Rinnai 26L gas hot water systems with controller
- Designer kitchen with stainless steel wrapped to full island & cooking area with silk matt joinery
- Engineered stone splashback & feature to island
- BOSCH appliances incl 2 x 71L 10 programme ovens & 80cm Induction hob plus AEG integrated dishwasher
- Thermal heart aluminum joinery with low E glass & argon gas - Architectural Metro Suite
- Dormakaba 'The Grange' keyless entry handle
- Overheight glass cavity slider with aluminium frame
- Raw steel with oil finish to study desk
- Seamless touch wardrobe doors in silk matte
- Bespoke wardrobe & store shelving - black hangers
- Alarm system incl hardwired smoke alarms
- Fujitsu ARTA30 & ARTA24 ducted central heating
- KNXtra smart home wiring with 4 touch panels
- Undertile heating to ensuite and bathroom
- Anti flare lights throughout & additional feature Lights
- Fully insulated garage incl Nevada sectional door
- Fully tiled ensuite with o/head dumper
- Fully tiled bathroom incl tiled shower, wall hung toilet & freestanding Form Petite Clearstone bath
- Michael Cesar Vanities with recessed handles
- Natures Oak Timber Flooring
- Built in laundry joinery incl laminate benchtop
- Corten steel feature frame to hallway doorway



## Options to reduce price

Change ducted heating systems to two Mitsubishi heatpumps AP60 and AP25	- \$8,750.00
Change thermally broken exterior aluminum joinery to standard residential double glazed suite	- \$10,452.00
Change to standard melamine range to kitchen joinery and 30mm engineered stone benchtops	- \$18,000.00
Change cladding to standard Rockcote with plaster/paint finish (retain cedar)	- \$3,750.00
Replace Espan 470 roofing with Metalcraft T-Rib .4 gauge longrun coloursteel	- \$13,790.00
Remove additional BOSCH combi oven	- \$1,750.00
Change induction hob from 80cm to 60cm	- \$1,200.00
Change bespoke robe doors to melamine wardrobe & store doors and include the I-robe system fit out	- \$7,200.00
Change raw steel study desk to melamine joinery	- \$500.00
Gib walls with tiled skirting to bathroom & ensuite in lieu of fully tiled walls	- \$3,750.00
Change glass and steel slider to polycore grooved or flush panel oversized cavity slider	- \$1,580.00
Reduce internal door heights to 1.98m	- \$1,725.00
Remove Knxtra smart wiring and control panels	- \$8,050.00
Remove concrete feature wall to living and replace with standard paint finish	- \$1,675.00
Remove corten steel frame to hallway entrance replace with standard gib finish	- \$1,250.00
Change Anti Flare Lights to standard LED downlights and switch plates to Vynco Fusion in white	- \$9,200.00

\*\* Showhome pricing based on TC1 site excludes E-one tank, camera system, landscaping, wallpaper and drapes. Current as at May 2021



**Greenland  
Homes**

